

# STONE HUB SERIES

With functional sizes, eye-catching textures and muted tones, our **STONE HUB** tiles compliment a plethora of modern design spaces. Featured across commercial and residential projects, in bathrooms, lobby, living and outdoor areas. Matt and grip finishes available in 600x600mm.



**PRODUCT TYPE:** Glazed porcelain

**COLOURS:** Warm White, Cream, Silver Grey, Terra, Taupe and Charcoal

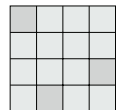
**SIZES:** 300x300mm  
600x600mm  
600x1200mm  
Rectified Edges

**FINISHES/USAGE:** Matt/Wall & Floor

**AESTHETIC QUALITIES:** Neutral tones with a textured look

**TECHNICAL DATA:** P3 Pendulum (Matt)  
P5 Pendulum (Grip)  
More technical data on last page

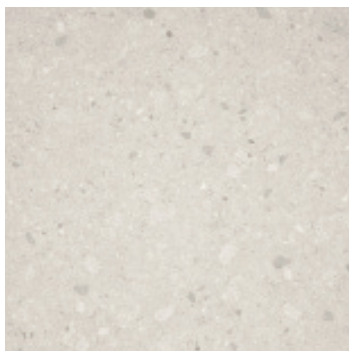
**VARIATION:**



V2

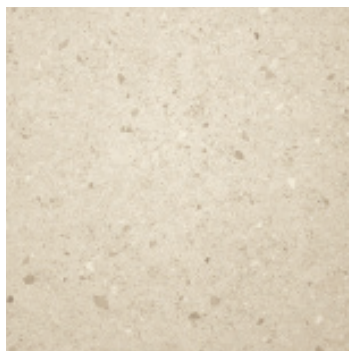
# STONE HUB SERIES

## PRODUCT INFORMATION



**Warm White**

Matt 300x300mm | 600x600mm  
600x1200mm  
Grip 600x600mm



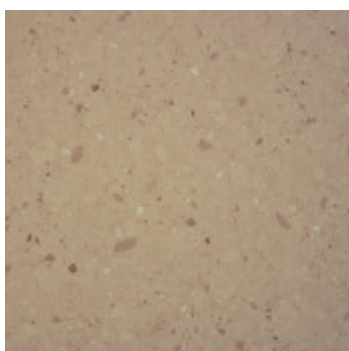
**Cream**

Matt 300x300mm | 600x600mm  
600x1200mm  
Grip 600x600mm



**Silver Grey**

Matt 300x300mm | 600x600mm  
600x1200mm  
Grip 600x600mm



**Terra**

Matt 300x300mm | 600x600mm  
Grip 600x600mm



**Taupe**

Matt 300x300mm | 600x600mm  
Grip 600x600mm



**Charcoal**

Matt 300x300mm | 600x600mm  
600x1200mm  
Grip 600x600mm





# STONEHUB SERIES










Variation is an inherent property of tiles and stone. Sizes are nominal and may include a joint.



# STONE HUB SERIES

## TECHNICAL DATA

	technical characteristics	test method	result
	water absorption	ISO 10545-3	0.21%
	breaking strength	ISO 10545-4	$\geq 1785\text{N}$
	frost resistance	ISO 10545-12	Guaranteed
	bending strength	ISO 10545-4	$\geq 33.5\text{MPA}$
	abrasion resistance	ISO 10545-7	Class 3
	chemical resistance	ISO 10545-13	GLA/GA
	resistance to staining	ISO 10545-14	class 5